



NTSC U/C

PlayStation



SLUS-01540



TRUCK MANIA



WARNING: READ BEFORE USING YOUR PLAYSTATION® GAME CONSOLE.

A very small percentage of individuals may experience epileptic seizures when exposed to certain light patterns or flashing lights. Exposure to certain patterns or backgrounds on a television screen or while playing video games, including games played on the PlayStation game console, may induce an epileptic seizure in these individuals. Certain conditions may induce previously undetected epileptic symptoms even in persons who have no history of prior seizures or epilepsy. If you, or anyone in your family, has an epileptic condition, consult your physician prior to playing. If you experience any of the following symptoms while playing a video game – dizziness, altered vision, eye or muscle twitches, loss of awareness, disorientation, any involuntary movement, or convulsions – IMMEDIATELY discontinue use and consult your physician before resuming play.

WARNING TO OWNERS OF PROJECTION TELEVISIONS:

Do not connect your PlayStation game console to a projection TV without first consulting the user manual for your projection TV, unless it is of the LCD type. Otherwise, it may permanently damage your TV screen.

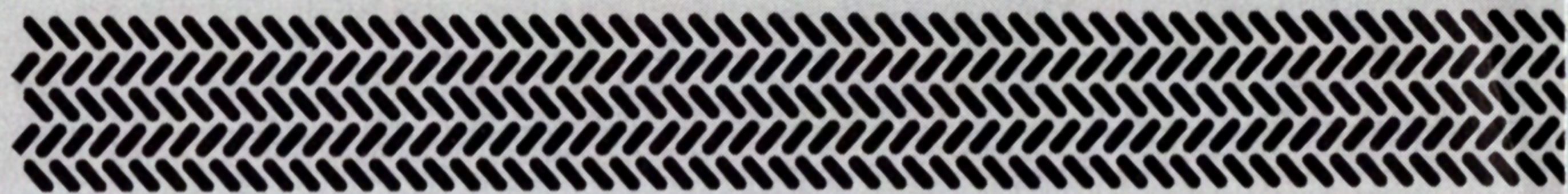
USE OF UNOFFICIAL PRODUCT:

The use of unofficial products and peripherals may damage your PlayStation game console and invalidate your console warranty.

HANDLING YOUR PLAYSTATION DISC:

- This compact disc is intended for use only with the PlayStation game console.
- Do not bend it, crush it or submerge it in liquids.
- Do not leave it in direct sunlight or near a radiator or other source of heat.
- Be sure to take an occasional rest break during extended play.
- Keep this compact disc clean. Always hold the disc by the edges and keep it in its protective case when not in use. Clean the disc with a lint-free, soft, dry cloth, wiping in straight lines from center to outer edge. Never use solvents or abrasive cleaners.

TABLE OF CONTENTS

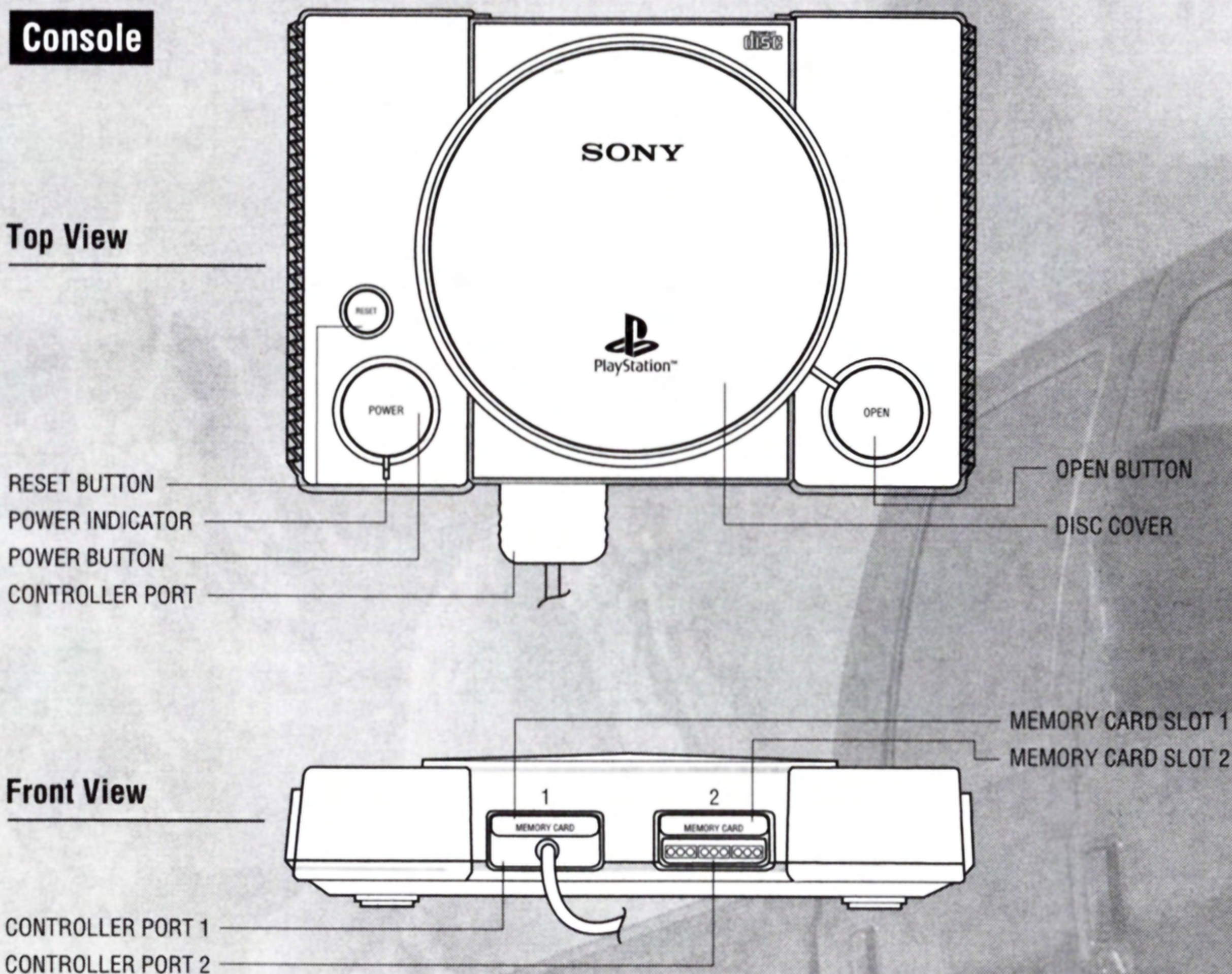


GETTING STARTED	2	COURSE RECORD	5
INTRODUCTION	3	CAREER STANDINGS	6
PLAYING THE GAME	3	SAVE RECORD TIMES	6
GAME SCREEN	4	SAVE CAREER	6
CURRENT LAP TIME	5	CONTINUE CAREER	6
TRACK MAP	5	SCORING	6
CAR POSITIION	5	PAUSE MENU	7
LAP COMPLETION	5	SETTING UP THE GAME	8
SPEEDOMETER	5	CREDITS	13
GEAR	5		
TACHOMETER	5		
RACE STANDINGS	5		

GETTING STARTED

Set up the PlayStation game console according to the instructions in its Instruction Manual. Make sure the Power is off before inserting or removing a disk. Insert the FORD TRUCK MANIA disc and close the Disc Cover. Insert game Controller and turn on the PlayStation game console. Follow the on-screen instructions to start game.

If you wish to save your game you will need a memory card (FORD TRUCK MANIA only supports MEMORY CARD slot 1). It is advised that you do not insert or remove peripherals or memory card once the power is on. Make sure there are enough free blocks on your memory card before commencing play.

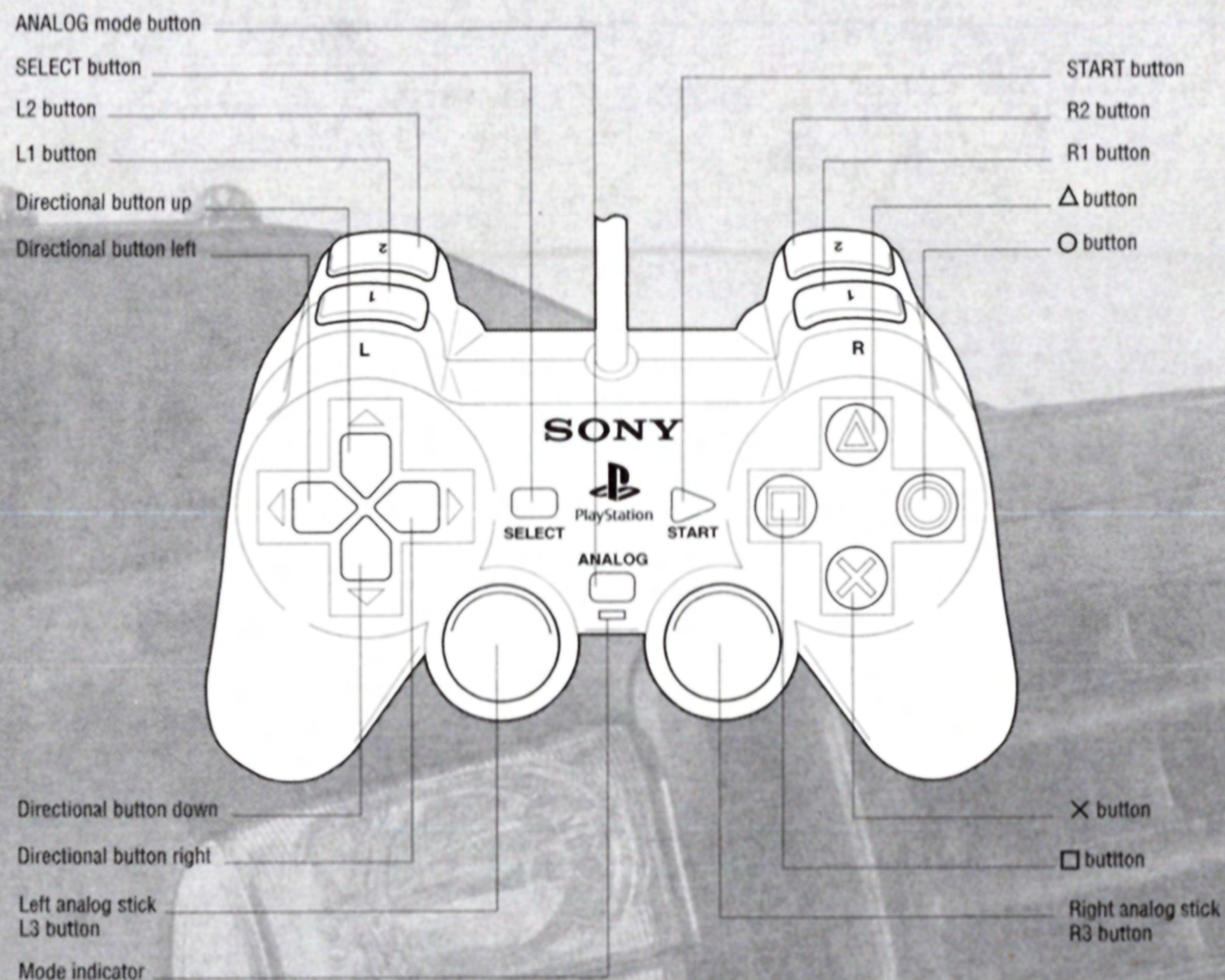


INTRODUCTION

Ford Truck Mania is an off-road racing game specifically devoted to Ford Trucks. It's a fast-action, high-energy racing game. Races take place in mountainous and desert terrain. It offers exciting, progressive racing action, competitions and a unique Career Path which are seamlessly tied together.

PLAYING THE GAME

DUALSHOCK®analog controller default settings:



Throttle
Brake
Rear View
Hand Brake

× button
□ button (reverse with auto gearbox)
△ button
○ button

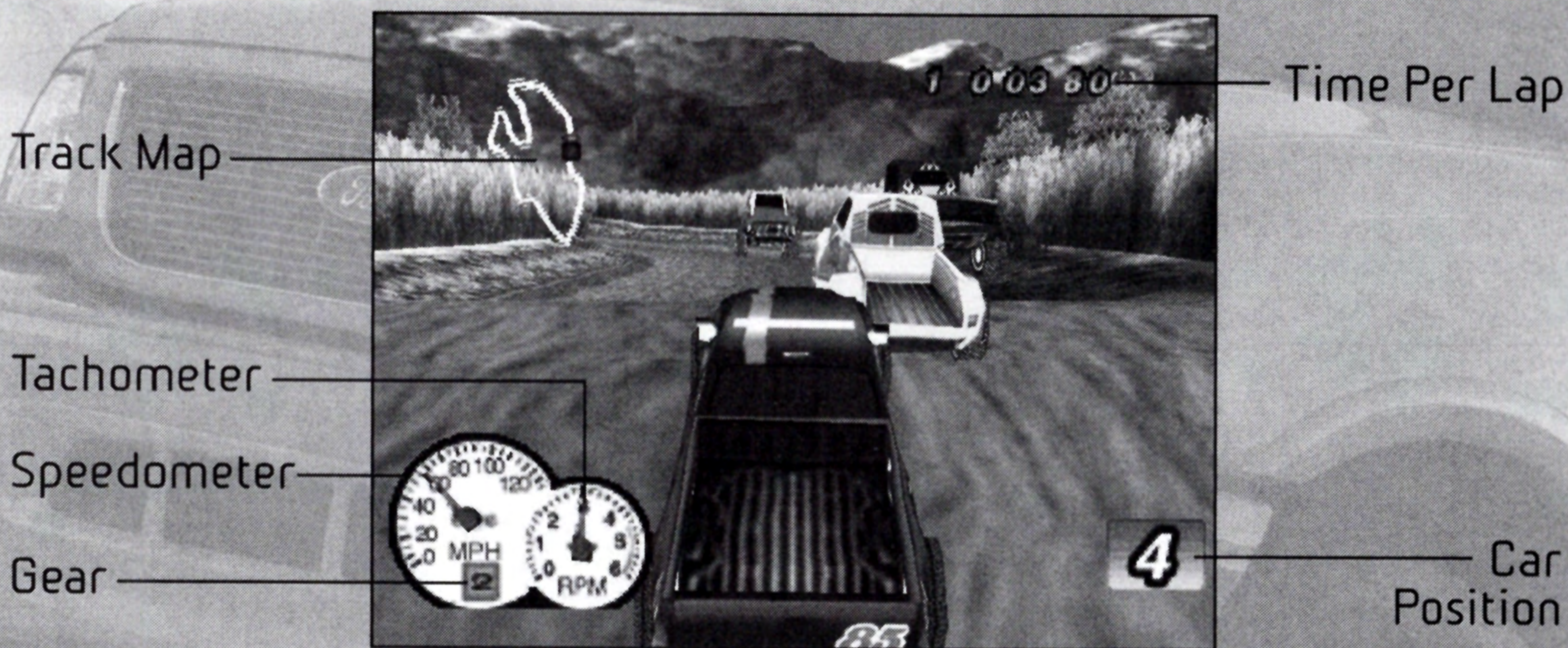
Shift Down/Reverse
Shift Up
Rock Left
Rock Right
Turn Left/Right
Pause/Options
Change Camera

L1 button (with manual gear box)
R1 button
L2 button
R2 button
Left/Right directional buttons
START button
SELECT button

Instant Replay Controls: Use the following controls while viewing instant replay.

Switches View to Another Truck L2 button/R2 button
Slow Motion Left directional button
Fast Replay Right directional button
Pause Replay Down directional button
Exit Replay \times button
Stationary Camera \triangle button

Game Screen



Current Lap Time

Posts the time it's taking to race the current lap.

Track Map

The track map displays a map of the track you are racing. The map is a moving map. In other words, your position never moves, the map's position does. Your truck is represented by the dot that is the same truck color. Your opponents are indicated by white or gray dots.

Car Position

Posts your current position.

Lap Completion

Indicates the number of laps you have completed.

Speedometer

Shows your current speed.

Gear

Indicates the gear your truck is in.

Tachometer

Indicates the engine revolutions per second.

Race Standings

At the end of each race, your Race Standings are displayed indicating the finishing position of each racer, including their course time.

Course Record

If you finished the race with a course record, you may enter your name and become the new course record holder. Use the up/down directional buttons to enter your name and use the left/right directional buttons to move the cursor to the left or right, respectively. Pressing the **○** button will remove letters to the right. Press the **✕** button to save your record and exit the screen.

Lap Record

If you finished the race with a lap record, you may enter your name as the new lap record holder. Use the up/down directional buttons to enter your name and use the left/right directional buttons to move the cursor left or right, respectively. Pressing the **○** button will remove the letters to the right. Press the **⊗** button to save your record and exit the screen.

Career Standings

Carrer Standings are displayed at the end of each race. Your goal is to finish your Career with the highest number of points among the racers.

Save Record Times

If you finished the race with a course record, you may save the new record time to a memory card. Follow the directions on screen to save.

Save Career

At the end of a career race, you may save the current career to a memory card. Follow the directions on screen to save.

Continue Career

At the end of each career race, you must choose whether to continue racing or end the career competition.

Scoring

In Career competition, your goal is to finish each career mode with the most points. To receive points for a race, you must complete the race. At the end of each Career Mode, you must have accumulated enough points to be in first, second or third place. At the end of the Professional level of the Career competition, if you have obtained the highest number of points, you will be the World Champion of Ford Truck Mania.

Pause Menu

While racing, you can press the START button to pause the game and choose from the following menu items:

Resume – Choose Resume and press the **X** button to return to the race in progress.

Camera – Selecting this option allows you to choose from different camera locations which determine how the race will be viewed. The options are: (1) In Car, which allows you to view the race from the driver's seat, (2) Normal, Chase and Far, which allows you to view the race at 3 different distances from behind the car.

Display – This option allows you to modify the Radar Map and Laps displayed on screen.

Turn the moving Radar Map ON or OFF by using the left/right directional buttons then press the **X** button. The Laps display can be changed to indicate all lap times or just the current lap time. Use the directional buttons to highlight the desired option and press the **X** button to select.




Audio – Use the left/right directional buttons to adjust the Sound and Music volume of the race.

Shock – Adjust the DUALSHOCK® analog controller with the left/right directional buttons.

Restart – By selecting Restart, the Confirm Restart Menu is brought up. Select Yes to restart the race or No to continue. This option is not available in Career mode.

Quit – By selecting Quit, the Confirm Quit Menu is brought up. Select Yes to quit the race or No to continue.

Setting Up the Game

From each menu, use the directional buttons to highlight the menu options. Use the  button to accept your menu choice and continue to the next menu screen. Use the  button to return to the previous menu. When the  button is pressed, any changes selected from that menu option screen will not be made.

Holding down the SELECT button and then holding down the START button for 2 seconds will reset the game and return you to the Title Screen.

Player Menu

To play two-player games, you need the appropriate equipment. In a two-player game, the player using Controller Port 1 is Player One. During two player races, Player One races on the top portion of the screen, Player Two races on the bottom.

Game Type Menu

Choose between Single Race, Career, Time Trial or Practice play modes.

Single Race

Select Single Race to race any available track.

Career

Select this menu option to start a new career or to continue a previously saved career.

New Career

Load Career

Time Trial

In Time Trial, complete the race as fast as possible. You are competing against the clock.

Practice

Use the Practice mode to familiarize yourself with the Ford Truck's handling and the different tracks.

Race Mode

Select the desired race mode from the following options:

Normal – Allows you to race 5 laps in the same direction against 3 other trucks.


Head-On – Allows you to race head on with the competition. In this race, another truck is racing in the opposite direction from you.

Suicide – Similar to Head-On, except 3 trucks are racing in the opposite direction from you. Lots of possibilities for collisions!

Player Difficulty

Following the selection of the Race Mode, choose your difficulty level. You may choose Amateur, Semi-Professional or Professional. To be able to unlock Semi-Pro level, however, you must have placed in the top 3 in Amateur Career Mode. To unlock the Pro level, you must have placed in the top 3 in the Semi-Pro Career Mode.

Track Selection

From the Track Menu, you can select from 12 different tracks for each Player Difficulty level. Choose the desired track by using the up/down directional buttons and press the  button to select the track.

Forward/Reverse

This option allows you to either race the selected track forwards or backwards.

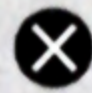
Vehicle Selection

From each level of player difficulty, you may choose from 4 different Ford Trucks to race.

Car Set-up Menu

After selecting your vehicle, you may adjust the Shocks, Steering, Brakes, Ratios, Gearbox and/or Tires. You also have the opportunity of changing your Truck's body paint and detail colors from the Options Menu.

Paint

Change the body paint and detail colors by moving the crosshairs in the paintbox to the desired colors. Use the directional buttons to move the crosshairs. Use the R1 and R2 buttons to select the brightness. Press the  button to confirm your selection.

Shocks

Set the dampening rate of your shocks from soft to hard. Softer suspension settings will absorb rough terrain better, but it will cause you to lose speed when bottoming out on hard landings. Harder dampening rates are not as smooth on rough terrain, but don't lose as much speed when bottoming out.

Steering

Adjust the sensitivity of your steering from slow to fast according to your driving style and track selection.

Brakes

You may shift the brake bias from front to back. Setting the bias towards the rear will result in more oversteer under hard braking - this gives your car a loose feeling. Setting the bias towards the front will result in the front of the car pushing under hard braking - this understeer gives your car a tighter feeling.

Ratios

You may change the gearbox ratios to suit a particular track. Lower settings will provide quicker acceleration, while higher settings will increase your top end speed.

Gearbox

You may choose to race with an Automatic or Manual transmission. An Automatic transmission will automatically shift your truck. This will allow you to concentrate on other fundamentals of the race. A Manual transmission adds the challenge of manually shifting your truck's gears as you race, plus, with practice, Manual gears can improve your lap/course times. R1 button upshifts your truck and L1 button downshifts it.

Tires

Choose between All Purpose, Off-Road, Snow and Slick tires according to the terrain.

Options

The Options Menu allows you to further customize your Ford Truck Mania race. After selecting Options, press the **X** button to adjust the Audio, Controller, Camera view and Save Menus.

Audio – Allows you to adjust the Music and Sound volume.

Controller – Selecting Controller 1 or 2 will allow you to adjust the control configuration. Use the left/right directional buttons to select between 4 of the different control code sets.

Config – After selecting the desired configuration, press the **X** button. up/down directional buttons select DUALSHOCK® analog controller options.

Camera View – Allows you to choose between In-Car, Normal, Chase and Far camera views.

Center Screen – Allows you to center the screen both horizontally and vertically.

Load Options – Allows you to load options from the memory card in MEMORY CARD slot 1.

Save Options – Allows you to save your selected options to a memory card.





Track Editor

From the Track Editor Menu, you can choose to Create Track, Edit Track, Load Track, Save Track or Race Track.

Create Track

For a completely customized racing experience, you can create your own race track by combining up to 17 different features, including jumps, water features, tunnels and mud pits.

- Use the directional buttons to select the grid square where you want to place your track piece.

- Use the R1 and R2 buttons to select the desired track piece and the  button to paste the piece into the course grid.
- Use the  button to copy a track piece from the course grid. After you have copied a piece, use the directional buttons to move to the grid square where you want the piece added. Use the  button to paste the piece into the course grid.
- Use the  button to delete or erase a piece.
- Use the L1 button to rotate pieces clockwise and the L2 button to rotate pieces counter-clockwise.
- When you have finished creating your custom track, press the START button to return to the main Track Editor Menu so you can save and race your track.
- Use the SELECT button to quit the Track Editor.

Edit Track

Allows you to edit tracks you have already created.

Load Track

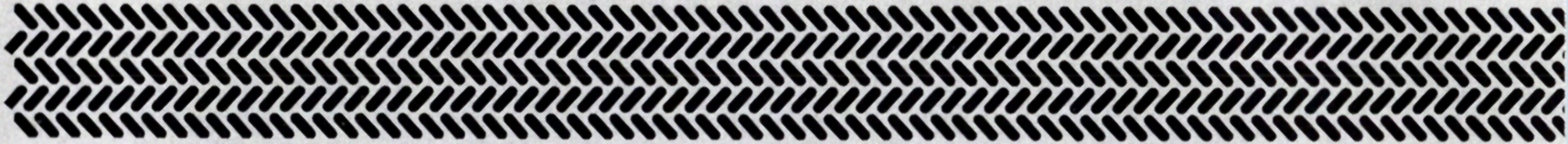
Allows you to load a saved track from the memory card so you can race it.

Save Track

Allows you to save a created track to your memory card. Make sure you have inserted a memory card into your PlayStation® before you attempt to Save.

Race Track

Allows you to race the Track you have just created, edited or loaded.



CREDITS

GOTHAM GAMES

President
Jamie Leece

General Manager
Greg Ryan

Executive Producer
David Nottingham

Produced By
James Pacquing

Product Manager
Jay Fitzloff

Assistant Product Manager
Peggy Yu

Business Development
Juan Gutierrez

Creative Services
Mike Cala
Larry Conti
Dan Lish

Production Services
Marc Nesbitt
Gregg Sanderson

Special Thanks
Peter Banks
Dan Einzig
Gary Foreman
Jennifer Kolbe
Kristine Severson
David Youn

Take-Two QA Europe

QA Manager
Mark Lloyd

Lead Tester
Charlie AA Kinloch

Tester
Steve McGagh

Alpine Studios, Inc.

Programming
Scott Pugh
Brent Iverson

Technical Artists
Brent Iverson
J. Allen Atherton

Artists
Les Pardew
Dan Whittington
J.T. Kauffman

Game Design
Les Pardew
Dan Whittington

Manual
Ross S. Wolfley

Quality Assurance
Ross S. Wolfley

Audio Director
Eric Nunamaker

Guitar
Thor Call
Michael Dowdle

Engineer
Steve Lerud

Testing
Ross S. Wolfley

Business Development BizDev Inc.

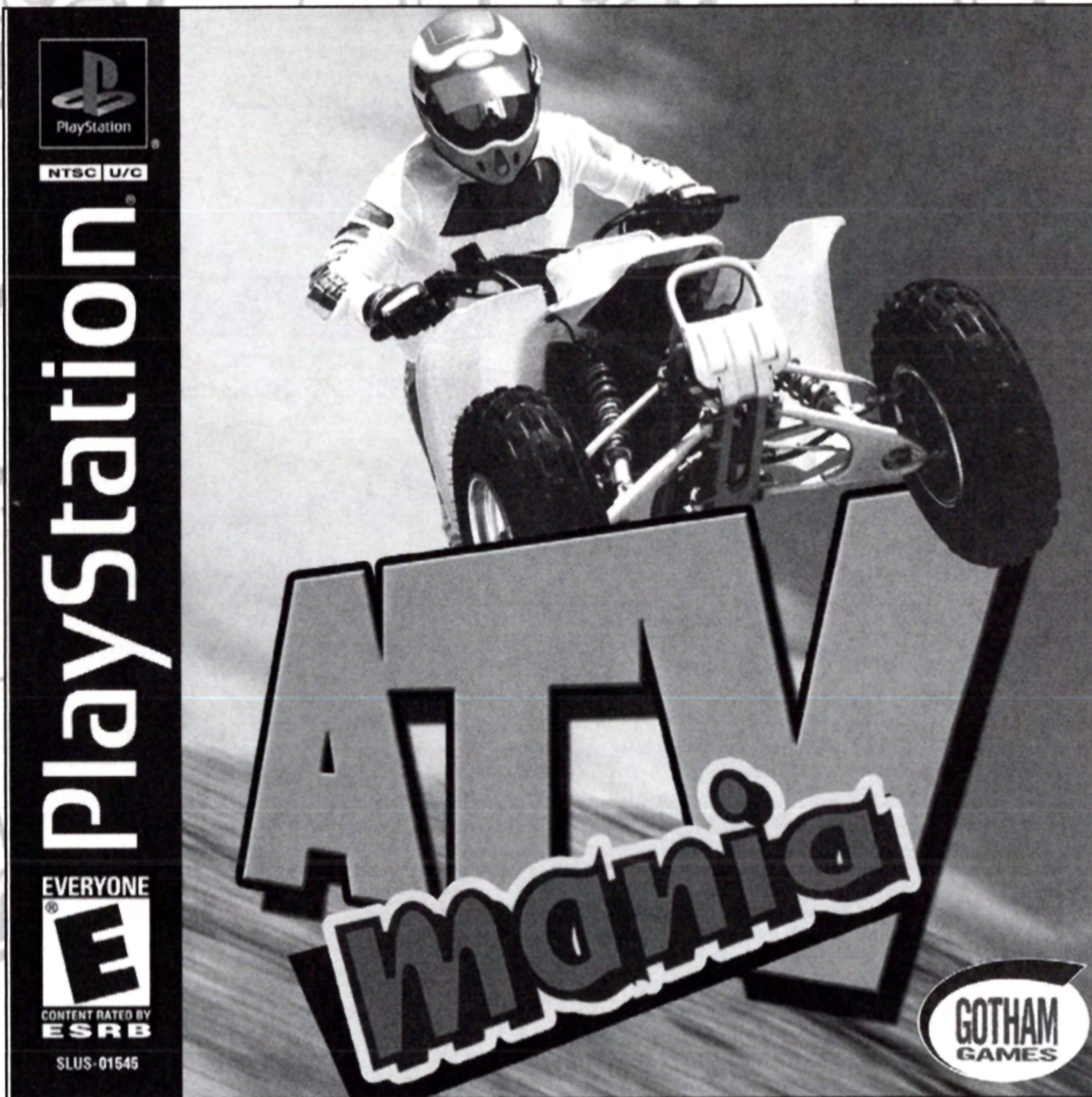
Engine Development
Idol Minds

Ford Oval and nameplates are registered trademarks
owned and licensed by Ford Motor Company.

Official Licensed Product

Ford Motor Company

Available Now . . .



Copyright 2002 Take-Two Interactive Software, Inc. Deibus Studios and the Deibus Studios logo are trademarks or registered trademarks of Deibus Studios, Inc. Published by Gotham Games. Gotham Games, the Gotham Games logo, ATV Mania, and the ATV Mania logo are trademarks of Take-Two Interactive Software, Inc. All Rights Reserved. PlayStation and PlayStation logos are registered trademarks of Sony Computer Entertainment Inc. The ratings icon is a trademark of the Interactive Digital Software Association.



WARRANTY

Gotham Games, a division of Take-Two Interactive Software, Inc., warrants to the purchaser only that the disc provided with this manual and the software program coded on it will perform in accordance with the description in this manual when used with the specified equipment, for a period of 90 days from the date of purchase.

If this program is found to be defective within 90 days of purchase, it will be replaced. Simply return the disc to Take-Two or its authorized dealer along with a dated proof of purchase. Replacement of the disc, free of charge to the original purchaser (except for the cost to return the disc) is the full extent of our liability.

THIS WARRANTY IS IN LIEU OF ALL OTHER WARRANTIES, WHETHER ORAL OR WRITTEN, EXPRESSED OR IMPLIED. ALL IMPLIED WARRANTIES, INCLUDING THOSE OF MERCHANTABILITY AND FITNESS FOR A PARTICULAR PURPOSE, IF APPLICABLE ARE LIMITED IN DURATION TO 90 DAYS FROM THE DATE OF PURCHASE OF THIS PRODUCT.

Take-Two shall not be liable for incidental and/or consequential damages for the breach of any express or implied warranty including damage to property and, to the extent permitted by law, damage for personal injury, even if Take-Two has been advised of the possibility of such damages. Some states do not allow the exclusion or limitation of any incidental or consequential damages or limitations on how long an implied warranty lasts, so the above limitations or exclusions may not apply to you.

This warranty shall not be applicable to the extent that any provision of this warranty is prohibited by any federal, state, or municipal law, which cannot be pre-empted. This warranty gives you specific legal rights and may also have other rights, which may vary from state to state.

You may not reproduce, prepare derivative work based on, distribute copies of, offer for sale, sell, transfer ownership of, rent, lease, or lend to others the Program or accompanying documentation, or any portion or component of the Program or accompanying documentation; provided, however, that you may transfer the entire Program and accompanying documentation on a permanent basis as long as you retain no copies (including archival or backup copies) of the Program, accompanying documentation, or any portion or component of the Program accompanying documentation, and the receipt agrees to the terms of the agreement. Further you may not modify, reverse engineer, disassemble, decompile or translate the Program or accompanying documentation, or any portion or component of the Program or accompanying documentation, nor may you make any copies of the Program modules for use with other programs. This program is intended for private use only.

GOTHAM GAMES

622 BROADWAY 4TH FLOOR NEW YORK, NY 10012

If you have a technical support problem concerning the operation of our software, please contact our technical support staff. Technical Support: 1-410-933-9191, M-F 9-5pm, ESTE-mail us at TechSupport@take2baltimore.com

ESRB RATING

This product has been rated by the Entertainment Software Rating Board. For information about the ESRB rating, or the comment about the appropriateness of the rating, please contact the ESRB at 1-800-771-3772.

AVAILABLE NOW



© 2003 Take-Two Interactive Software, Inc. Alpine Studios and the Alpine Studios logo are trademarks or registered trademarks of Alpine Studios, Inc. Published by Gotham Games. Gotham Games, the Gotham Games logo, Motocross Mania 2, and the Motocross Mania 2 logo are trademarks of Take-Two Interactive Software, Inc. All Rights Reserved.

Gotham Games 622 Broadway, New York, NY 10012

© 2002 Take-Two Interactive Software, Inc. Alpine Studios and the Alpine Studios logo are trademarks or registered trademarks of Alpine Studios, Inc. Published by Gotham Games. Gotham Games, the Gotham Games logo, and the Ford Truck Mania logo are trademarks of Take-Two Interactive Software, Inc. Ford and the Ford logos are trademarks or registered trademarks of the Ford Motor Company. All Rights Reserved.

Licensed by Sony Computer Entertainment America for use with the PlayStation game console. PlayStation and the PlayStation logos are registered trademarks of Sony Computer Entertainment Inc. The ratings icon is a trademark of the Interactive Digital Software Association. Manufactured and printed in the U.S.A. THIS SOFTWARE IS COMPATIBLE WITH PLAYSTATION GAME CONSOLES WITH THE NTSC U/C DESIGNATION. U.S. AND FOREIGN PATENTS PENDING.

